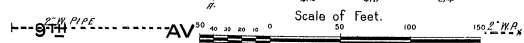


FEB. 1920
BRISTOW
 OKLA.



Copyright 1920 by the Standard Map Co.

BRISTOW GLASS COMPANY
 MFGS OF GLASS BOTTLES

DEEP WELL PUMP NO. 1
 CAPACITY 55 TONS PER HOUR
 HAND DRY & MOIST AD REGUM
 MOTORING, ENGINEERS CONTINUOUSLY
 ON DUTY - HEAT-GAS STONES - LIGHTS
 TELEPHONE POWER-PLANT - COOLING
 WATER CONNECTIONS - FIREWORKS & 10
 GAS - EXHAUSTORS

SOUTHLAND COTTON OIL CO. - COTTON GIN

REAR ABOUT 5 MILES FROM THE NEW
 FARMY LIVES IMPROVES HEAT
 SPINE & BOLTER - ELECTRIC
 POWER - SYSTEM - FEELS GIVE
 CITY WATER - 2-1/2 IN. HOLES - 50
 POUNDS TO LINT FLUX
 MACHINERY - 10
 CONTINUOUS SYSTEM OF SHINING - 10
 PORTS GIN STRINGS TO STATE EXHIBIT
 2 SQUARE BALE PRESSES

JOE ABRAHAM'S CUSTOM GIN NO. 1

REAR ABOUT 5 MILES FROM THE NEW
 FARMY LIVES IMPROVES HEAT
 SPINE & BOLTER - ELECTRIC
 POWER - SYSTEM - FEELS GIVE
 CITY WATER - 2-1/2 IN. HOLES - 50
 POUNDS TO LINT FLUX
 MACHINERY - 10
 CONTINUOUS SYSTEM OF SHINING - 10
 PORTS GIN STRINGS TO STATE EXHIBIT
 2 SQUARE BALE PRESSES

CREAK COTTON OIL CO.

MILL HAND DRY & MOIST - IMPROVES HEAT
 MACHINERY - 10
 CONTINUOUS SYSTEM OF SHINING - 10
 PORTS GIN STRINGS TO STATE EXHIBIT
 2 SQUARE BALE PRESSES

CREAK COTTON OIL CO.

MILL HAND DRY & MOIST - IMPROVES HEAT
 MACHINERY - 10
 CONTINUOUS SYSTEM OF SHINING - 10
 PORTS GIN STRINGS TO STATE EXHIBIT
 2 SQUARE BALE PRESSES

11TH AV.

2" W. PIPE

SYCAMORE

2" W. PIPE

10TH AV.

2" W. PIPE

GILMORE LUMBER COMPANY

1ST CHRISTIAN CHURCH

MEASUREMENT STOCK APPARATUS, COOLING

2" W. PIPE

SOUTHWESTERN BELL TELEPHONE CO.

2" W. PIPE

CREAK COTTON OIL COMPANY

2" W. PIPE

8TH AV.

2" W. PIPE

BRISTOW WATER WORKS

PUMPING SYSTEM
 PUMP NO. 1
 PUMP NO. 2
 PUMP NO. 3
 PUMP NO. 4
 PUMP NO. 5
 PUMP NO. 6
 PUMP NO. 7
 PUMP NO. 8
 PUMP NO. 9
 PUMP NO. 10
 PUMP NO. 11
 PUMP NO. 12
 PUMP NO. 13
 PUMP NO. 14
 PUMP NO. 15
 PUMP NO. 16
 PUMP NO. 17
 PUMP NO. 18
 PUMP NO. 19
 PUMP NO. 20

33

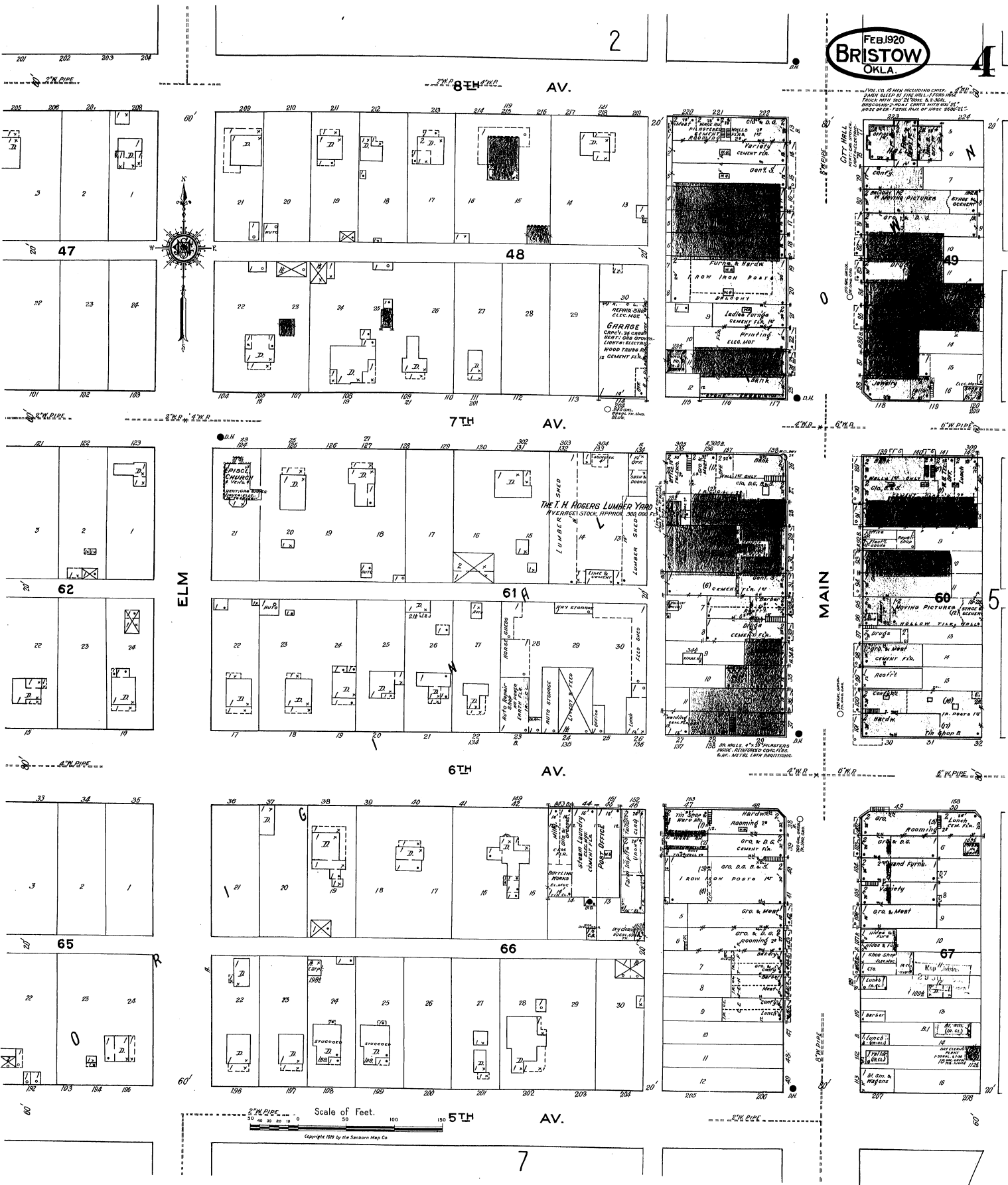
2" W. PIPE

40

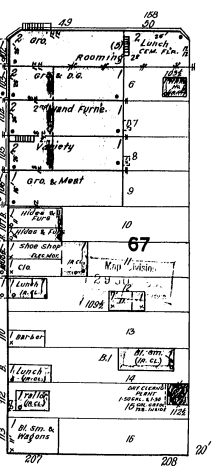
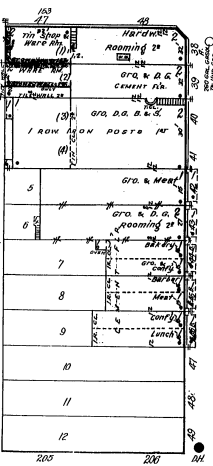
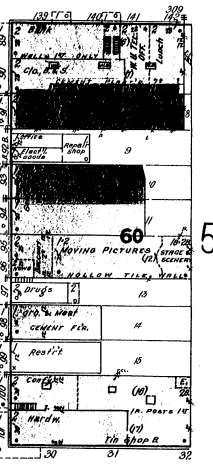
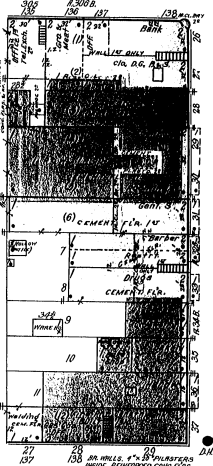
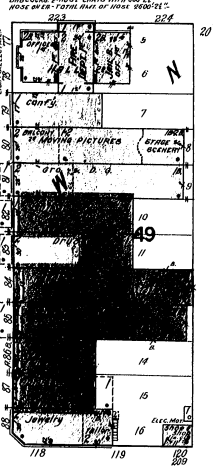
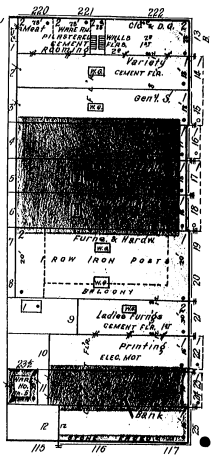
2" W. PIPE

6

2" W. PIPE

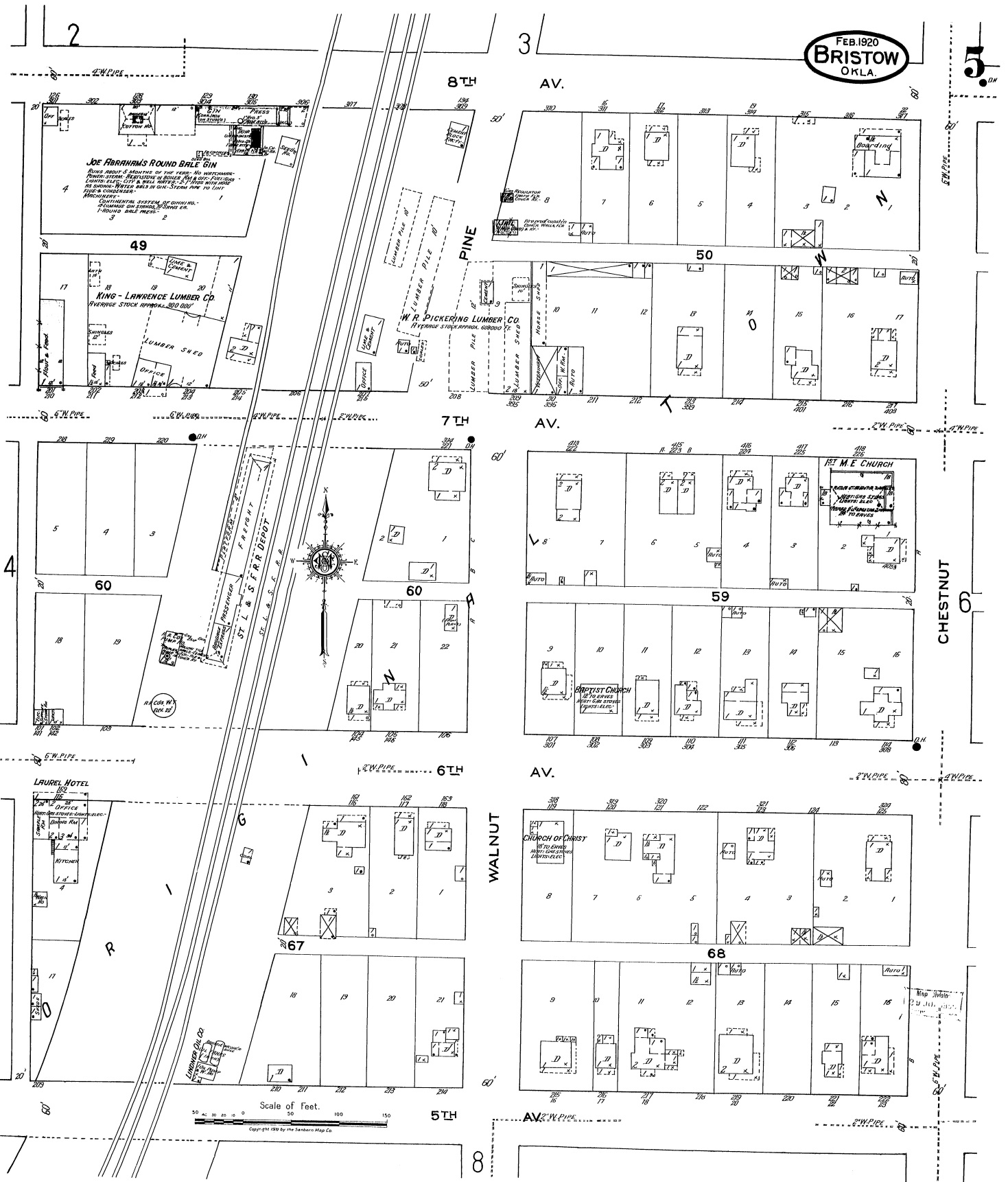


Scale of Feet.
0 50 100 150
Copyright 1920 by the Sanborn Map Co.



FEB. 1920
BRISTOW
OKLA.

5
DM



2

3

8TH AV.

49

KING - LAWRENCE LUMBER CO
Storage Stock approx. 200,000

W.R. PICKERING LUMBER CO
Storage Stock approx. 100,000

50

7TH AV.

60

59

1ST M.E. CHURCH

BAPTIST CHURCH

6TH AV.

LAUREL HOTEL

CHURCH OF CHRIST

WALNUT

CHESTNUT

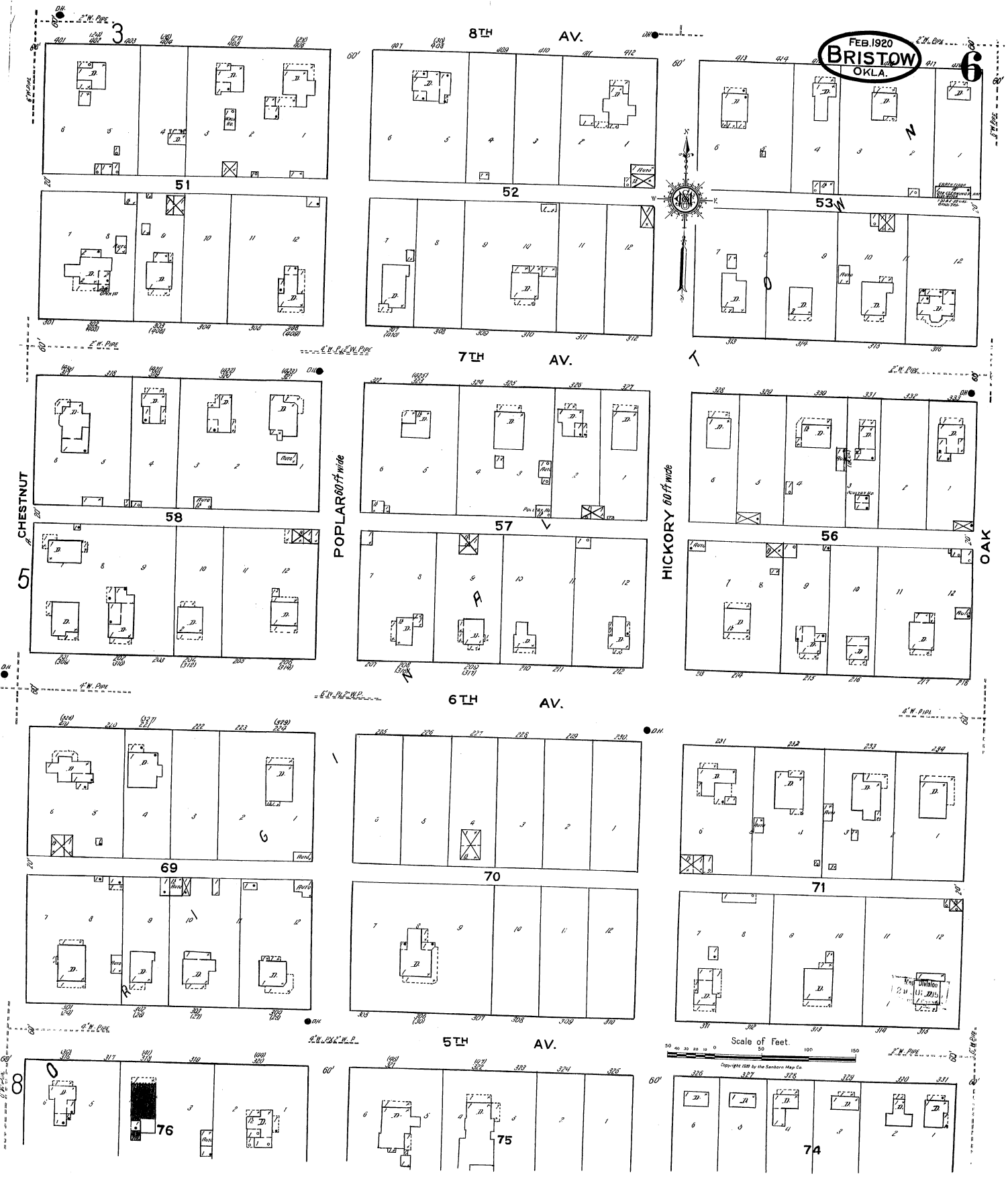
Scale of Feet.

5TH

8

Copyright 1919 by the Standard Map Co.

FEB. 1920
BRISTOW
OKLA.



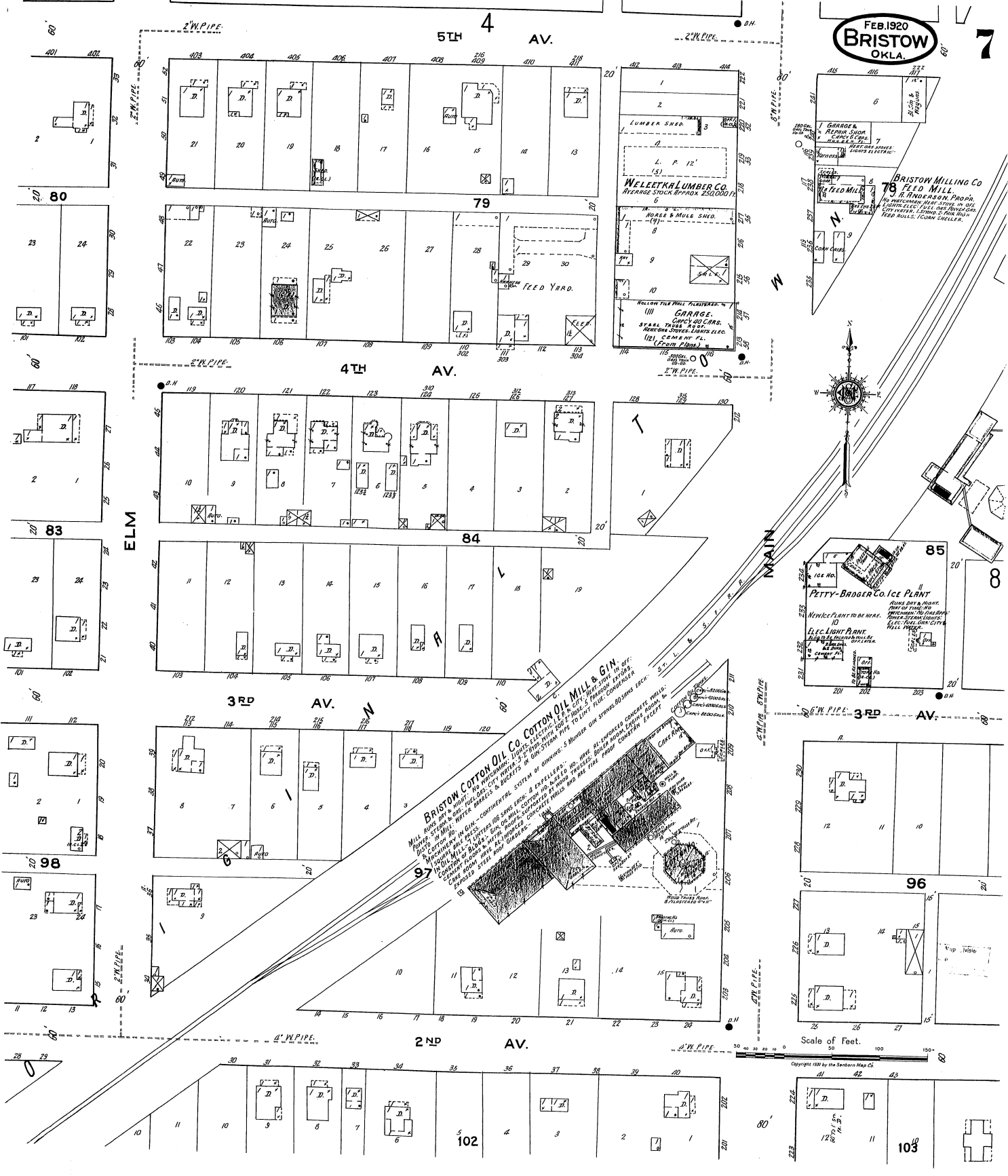
Scale of Feet.
0 20 40 60 80 100 120 140 160
Copyright 1920 by the Sanborn Map Co.

CHESTNUT

POPLAR 80 ft wide

HICKORY 60 ft wide

OAK



Scale of Feet.

Copyright 1920 by the Sanborn Map Co.

